

3G router Instructions

3G solution introduction

Customers could send big size files, like video or high quality image through 3G with fast speed.

Hardware:

1. 3G router could insert a SIM card directly or 3G router connects with a 3G card through USB port.
2. Xixun control card M10/M20 or M31
3. 3G SIM card

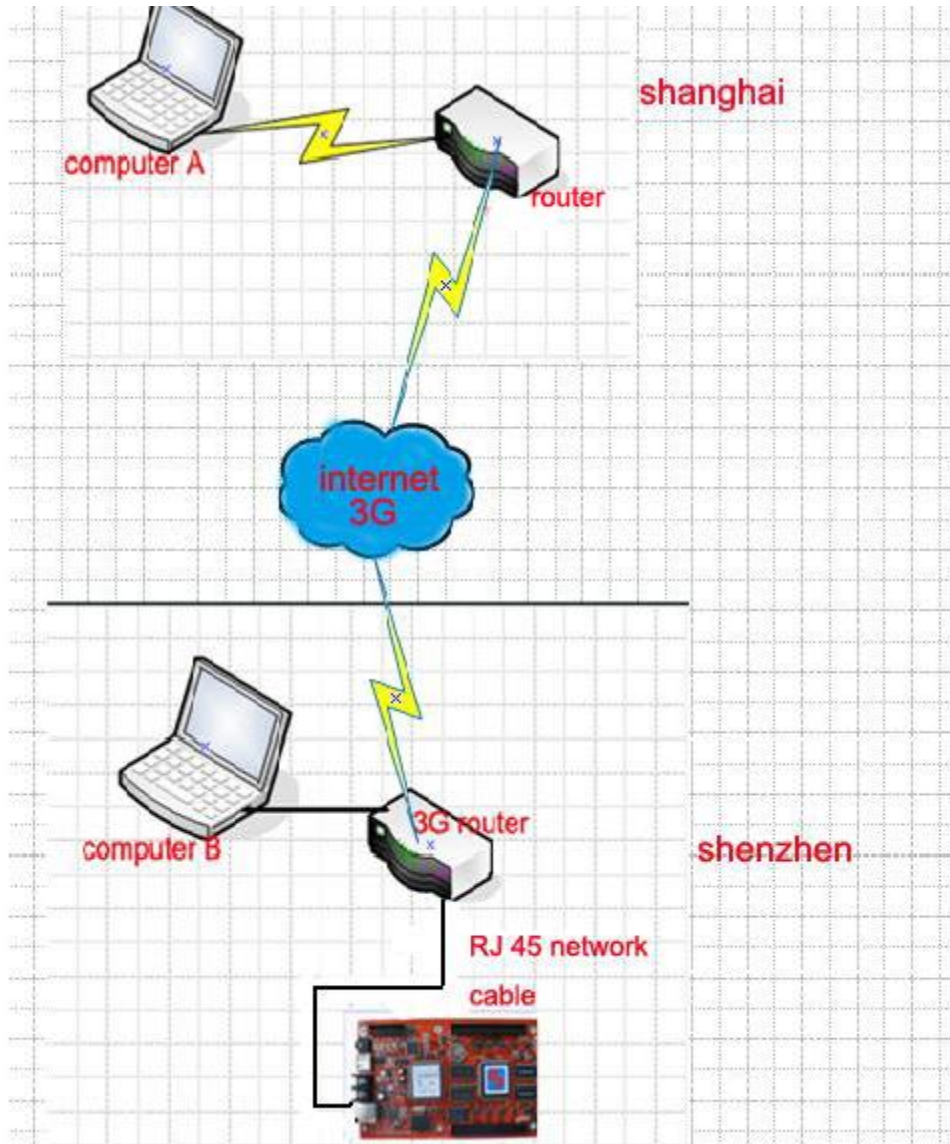
Software:

1. LED Editor software
2. LEDSet2.0 software
3. Static IP or Domain name

Precondition:

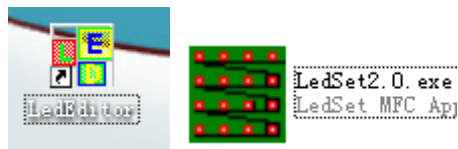
There should be covered by 3G signal. Now WCDMA is very popular all over the world, CDMA2000, EVDO are also used in Korea and USA. Please make sure which 3G signal in the place of LED sign before buying 3G router and SIM card.

Whole connection diagram of 3G and control card:



Before you use 3G, you need to apply a valid domain name on website.
Such as: www.oray.com / www.dyndns.com/www.3322.org

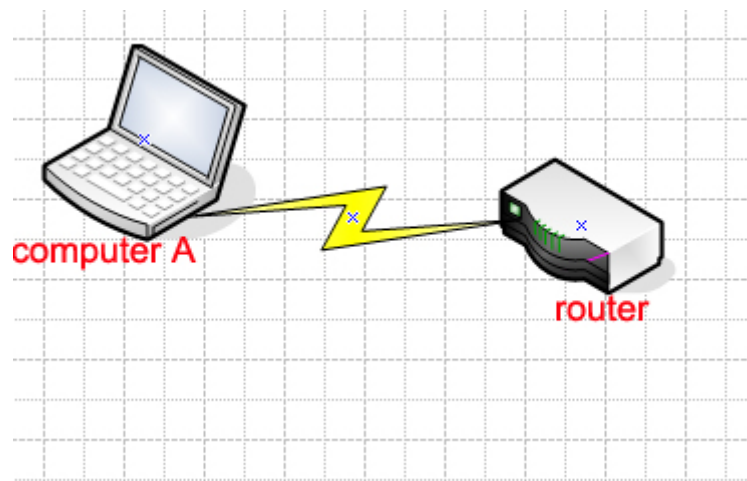
Step 1; please install LED editor software and LEDset2.0 software in computer A and computer B.



Step 2, connects computer A with a general router so that the computer could access to internet.



Now we need to do setup for this router. Please open internet explorer in the computer A then write down router's default IP and login.



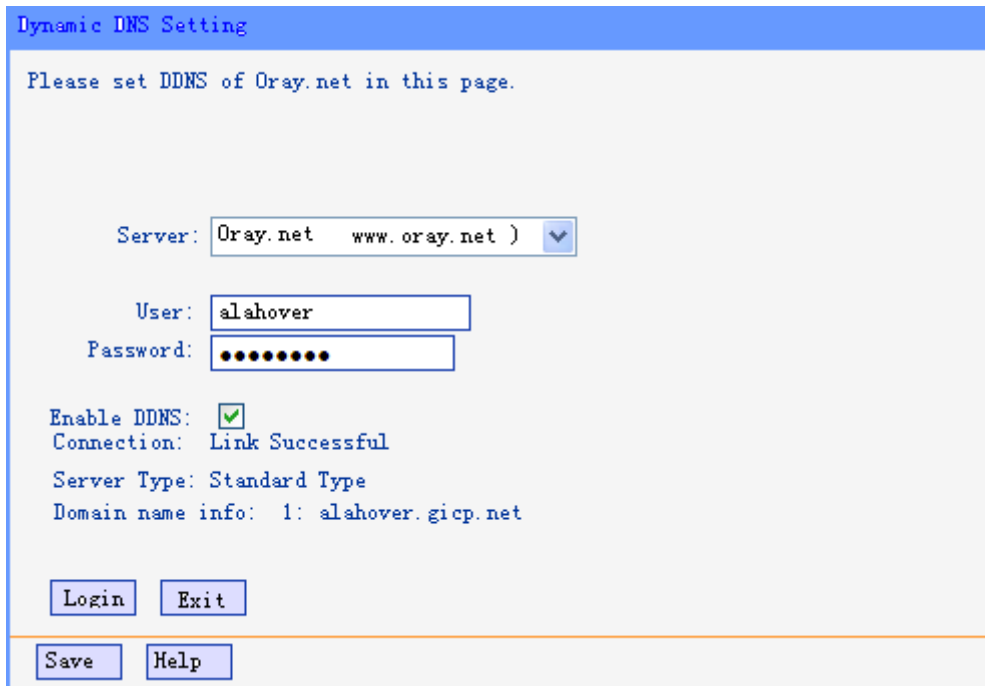
Here, we take 192.168.8.1 for example. After login, please find **Port forwarding** option then add a new forwarding and make sure that internal and external (private and public) port is **31297**.

Private IP: this is the computer A's LAN IP.

Port: usually customers have internal port and external port (private or public). But make sure these two ports both at **31297**.

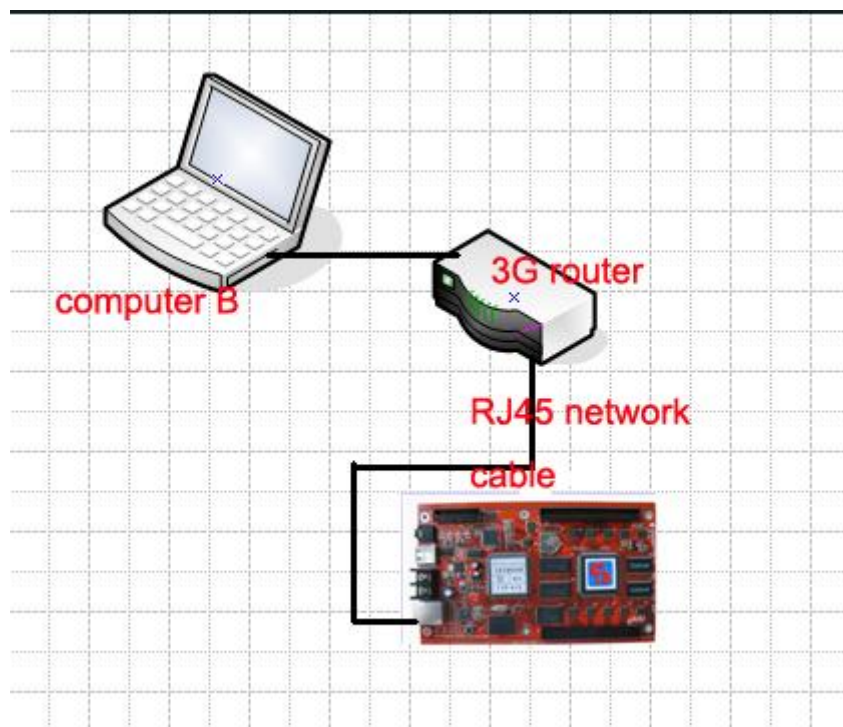
Server Port:	<input type="text" value="31297"/>	(XX-XX or XX)
IP Address:	<input type="text" value="192.168.8.32"/>	
Protocol:	<input type="text" value="ALL"/>	
State:	<input type="text" value="able"/>	

Step 3, after finishing the port forwarding, customers need to login Domain name. Customers should have a valid domain name. Please find Dynamic DNS option in router, and input your domain name in it.



Another method to login domain name, please download client-side software and then login your domain name.

Step4, Now we should to setup computer B with 3G router and control card. First of all, please connect the computer B with 3G router and control card through RJ45 network cable. Please see connection diagram in below:



Step5, turn on 3G router and control card power, and then open LEDset2.0 software in computer B. First thing we need to check gateway of 3G and then make computer B gets IP automatically,

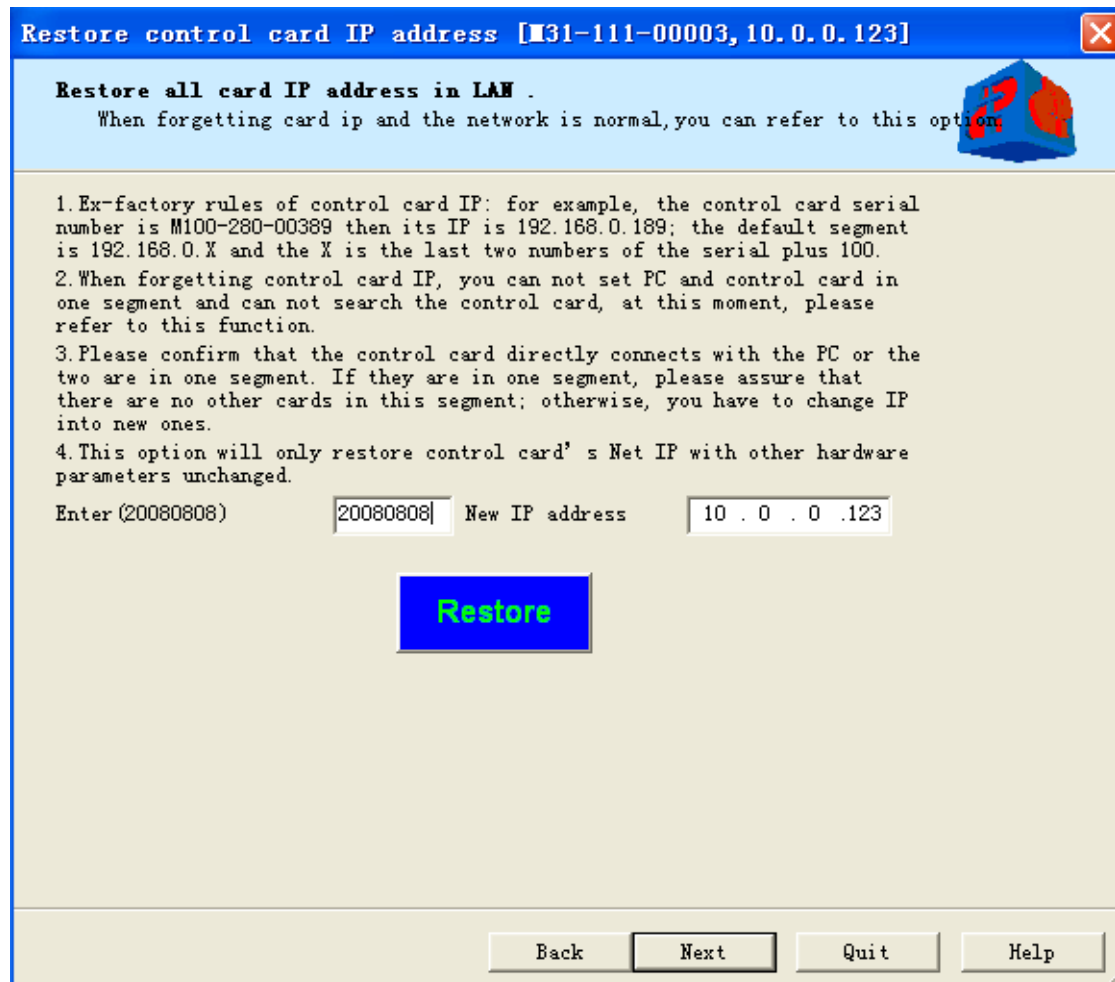
so that computer B and 3G will be in one network segment. Then click on

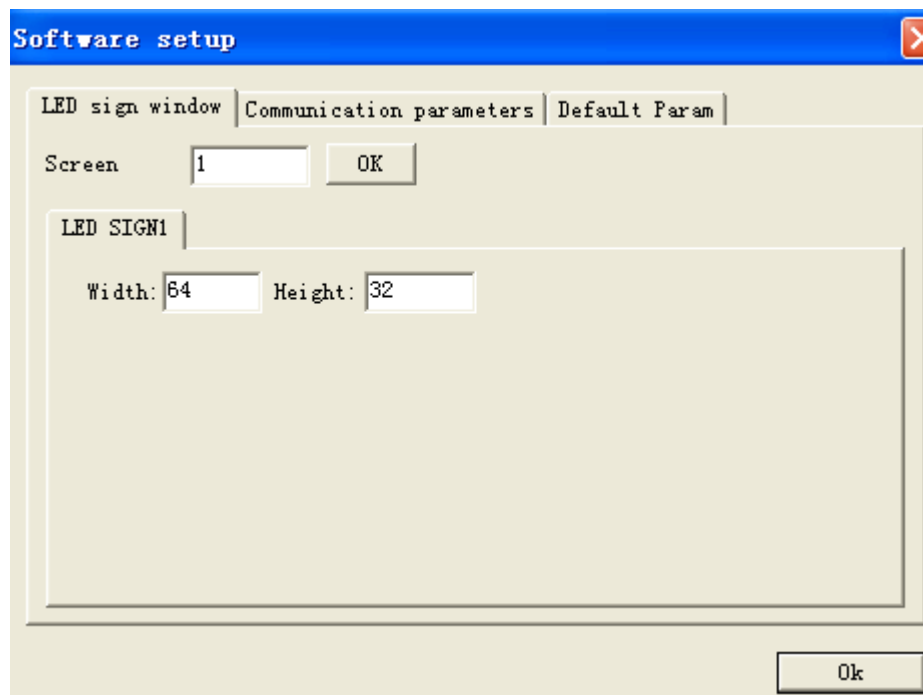
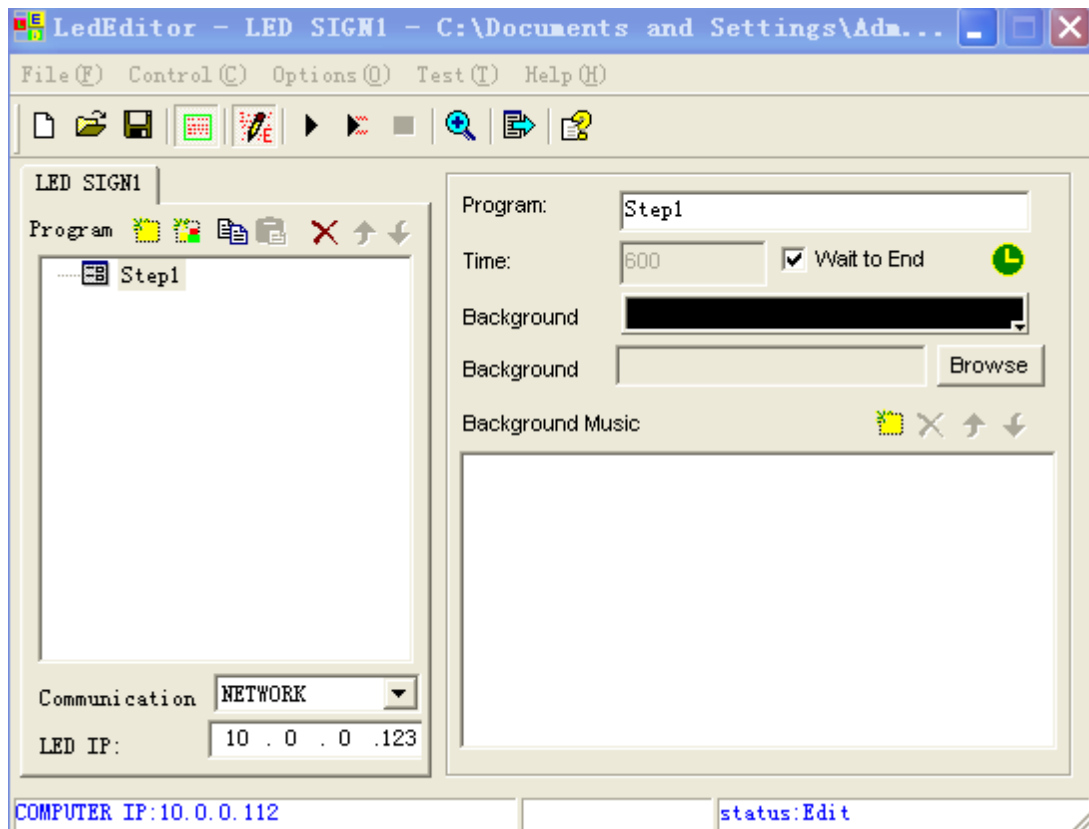
Restore control card IP address

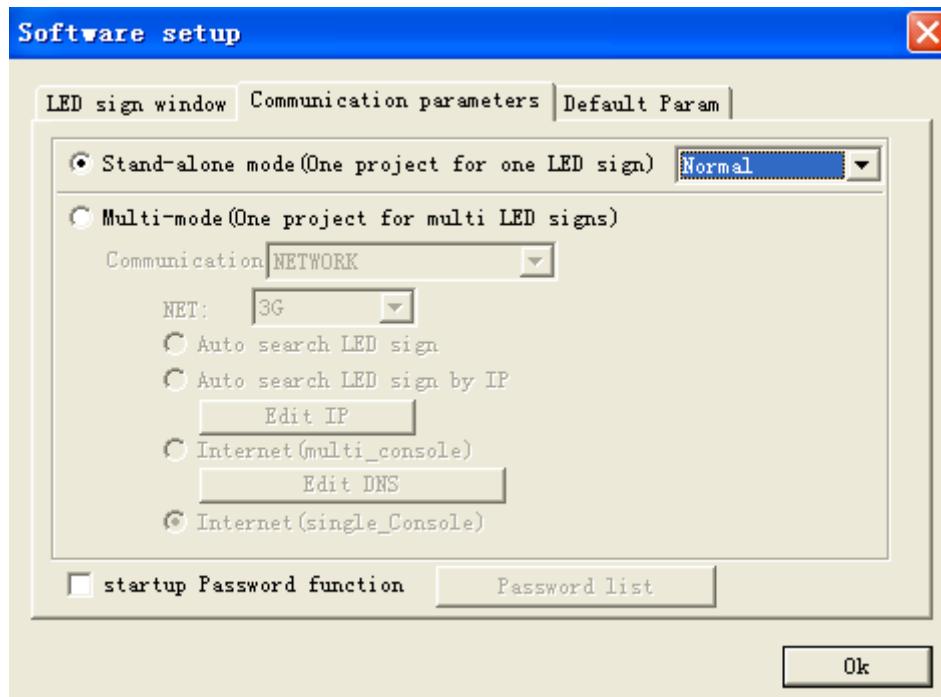
and input 20080808 and input new IP for control card.

Next customers need to do Configuration for the control card. Please refer to LEDset2.0 software Instructions for configuration.

Here, we take 10.0.0.138 for example, so now default gateway of 3G is 10.0.0.138 and computer B's IP is 10.0.0.112 and restore control car IP into 10.0.0.123. Please see following pictures:







Step7, please back to interface and then click on Options→Hardware setup--password is 888
Here, customers need to check **IP address, Subnet mask, Default, and Server Domain** information.

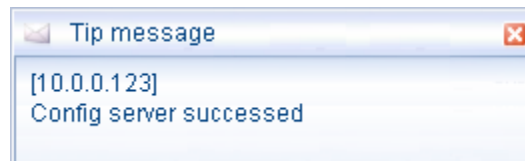
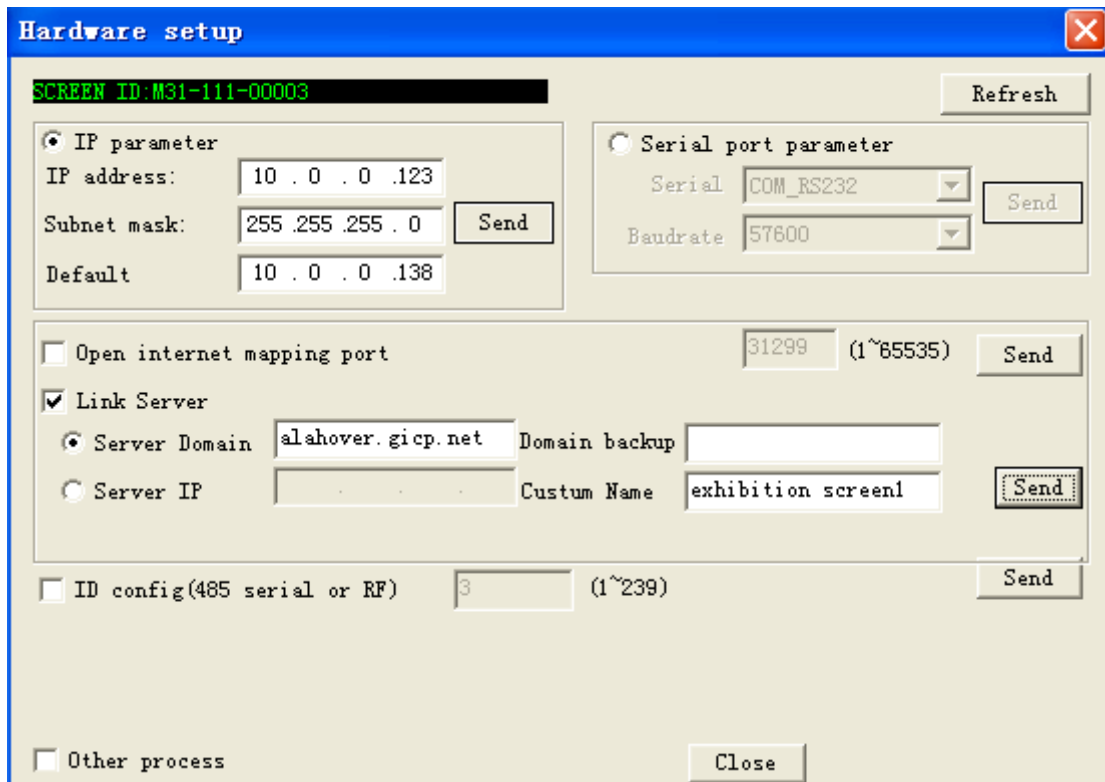
IP address: this is control card IP address. Here customers should keep computer B IP, control card IP and 3G router IP in the same network segment.

For example, now we have a 3G router default gateway is **10.0.0.138**, computer B IP address is **10.0.0.112** and control card IP address is **10.0.0.123**. These IP addresses are all in **10.0.0** network segment.

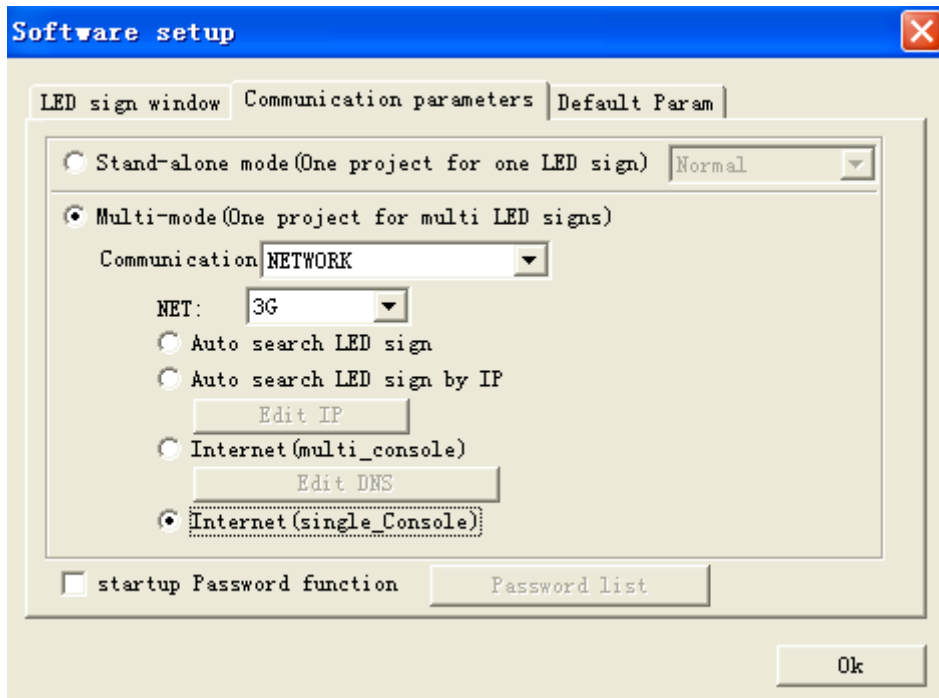
Subnet mask: please check and make sure that the subnet mask is a normal one, like 255.255.255.0

Default: this is default gateway. The default gateway of 3G router, it is 10.0.0.138.

Server domain: Please write down that valid domain name. After this, please click on Send button and a tip message will pop out.



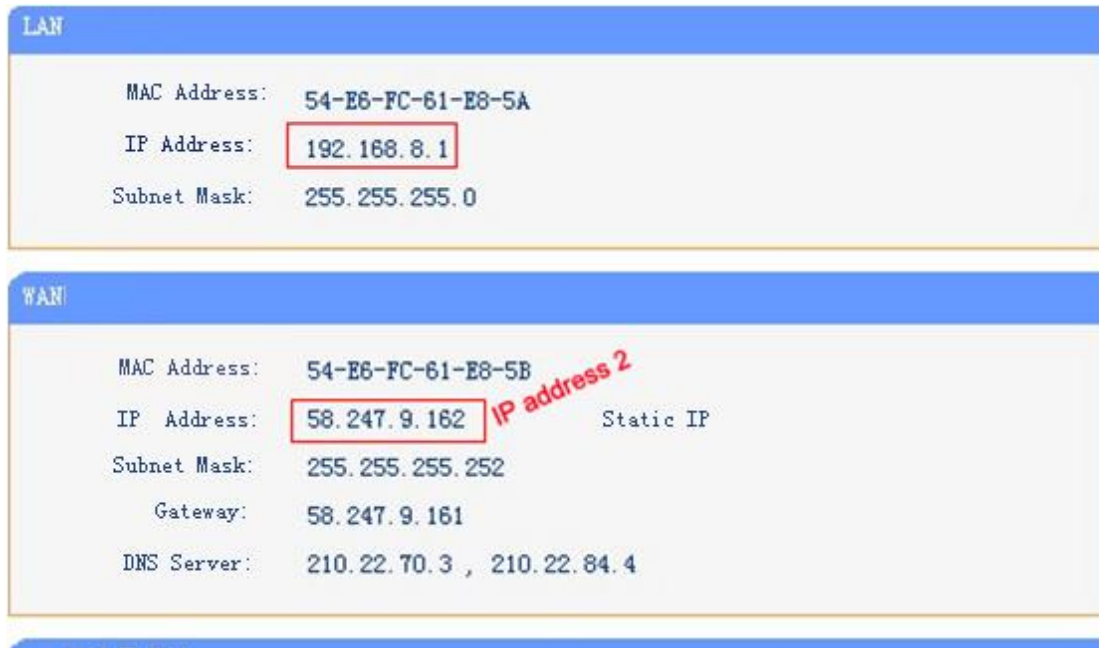
Then back to interface and click on Options→Software setup→communication parameters→Multi-mode→Network→3G→Internet (single console)--OK, password is 888.



Now all works have been done, but we need to verify if all parameters are correct.

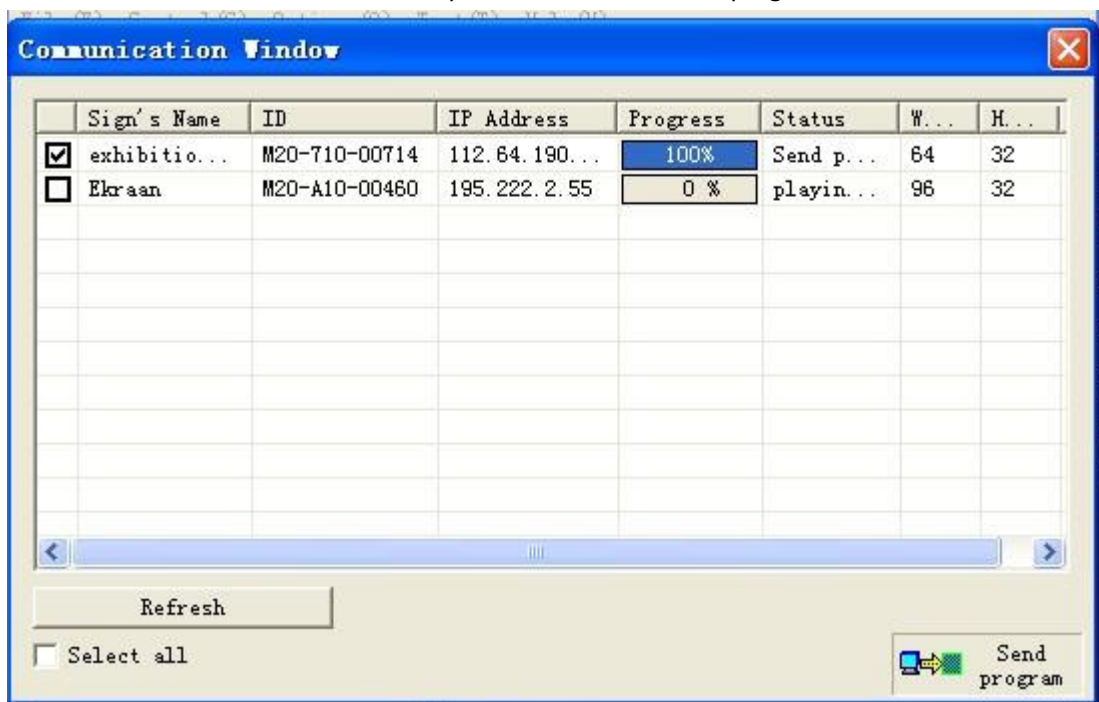
Verify steps

Step 1; make sure that computer B could access to internet through 3G router and can find control card IP through LEDset2.0 software.



Step4, we should make sure that IP address 1 and 2 are the same. This means that computer A could communicate with 3G and control card.

After we finished verification, please stop connection between computer B and 3G router. We need to use LED editor software in computer A to edit and send program, as show in below:



NOTE

1. If customers still could not send program successfully even verification correctly. Please connect our company we have computer and 3G router to help customers to do further verification.

2. When 3G router access to internet, the RUN/ALAM lights in controller will blinking.
3. 3G solution can be used together with Internet single-console solution. There is only one difference that internet single-console solution will use normal router instead with 3G router. For details, please connect our company.

Our email:wh@xixuneld.com